



Woods



THE "SUDAN GOVERNMENT" STEAMERS "SUDAN & BRITAIN" ON THE NILE.

NATIVE TOWN OF DIRR ON THE NILE SUDAN BORDER



EVENING ON THE NILE TO HALFA,



ON THE NILE





AT SUNNY ASSUAN



THE DOLEEB PALM, SOUTHERN ASSUAN









BISHAREEN CHILDREN AT ASSUAM



133
COPYRIGHT

A SHULLUK WARRIOR, RENK

G. N. MORRIS
THE ENGLISH PHARMACY
SHARTEL'N





Philé - Barque sacrée.

5033 A. C. Brogini - Milano-Caire



Philé - Galerie du temple.

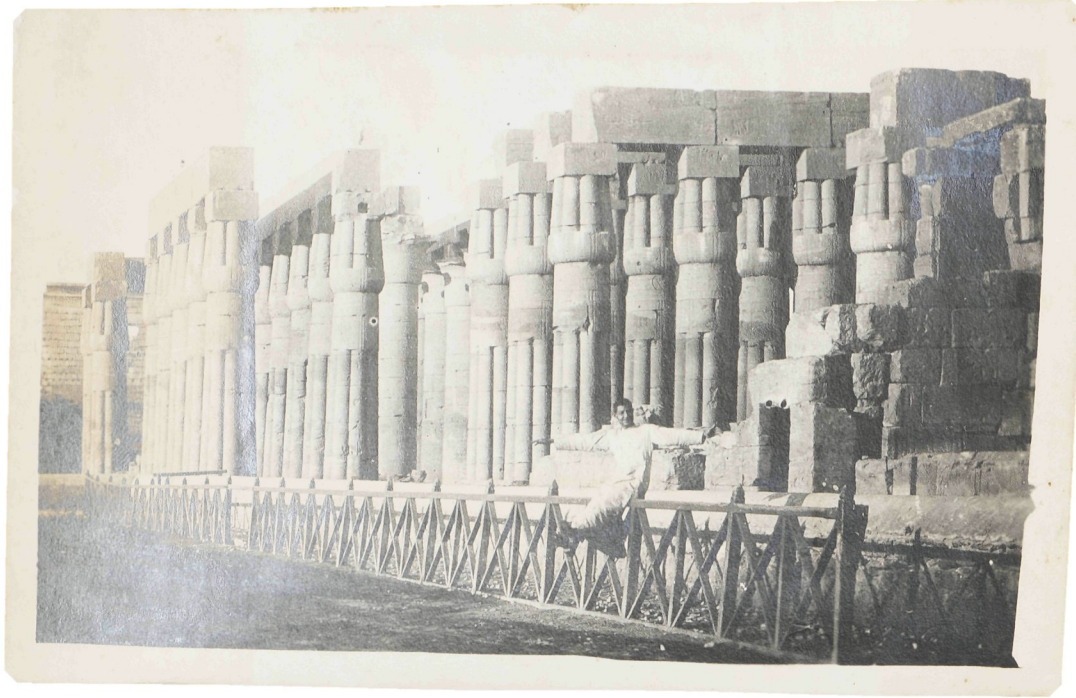
5006 A. C. Brogini - Milano-Caire.





PHARAO'S BED AT PHILAE









involved in - hunt!



pend. involved fr. Kunst







Vertical columns of hieroglyphs, likely representing a list of offerings or a ritual text. The text is arranged in approximately 15 columns, starting from the left side of the page.





Imp Berthaud Frères, Paris

Musée du Caire — N° 2 : n° 1, Statue d'Osiris, le dieu des morts ; n° 2, Statue d'Isis (femme et sœur d'Osiris), XXX^e dyn. (av. J.-C. 378-340). Découvertes à Sakkara.

F. D. P. droit réservé.



Musée du Caire — N° 20 : Aménophis II, mis sous la protection de la déesse Renen. XVIII^e dyn. (av. J.-C. 1600-1368). Découvert à Louxor.

F. D. P. droit réservé.

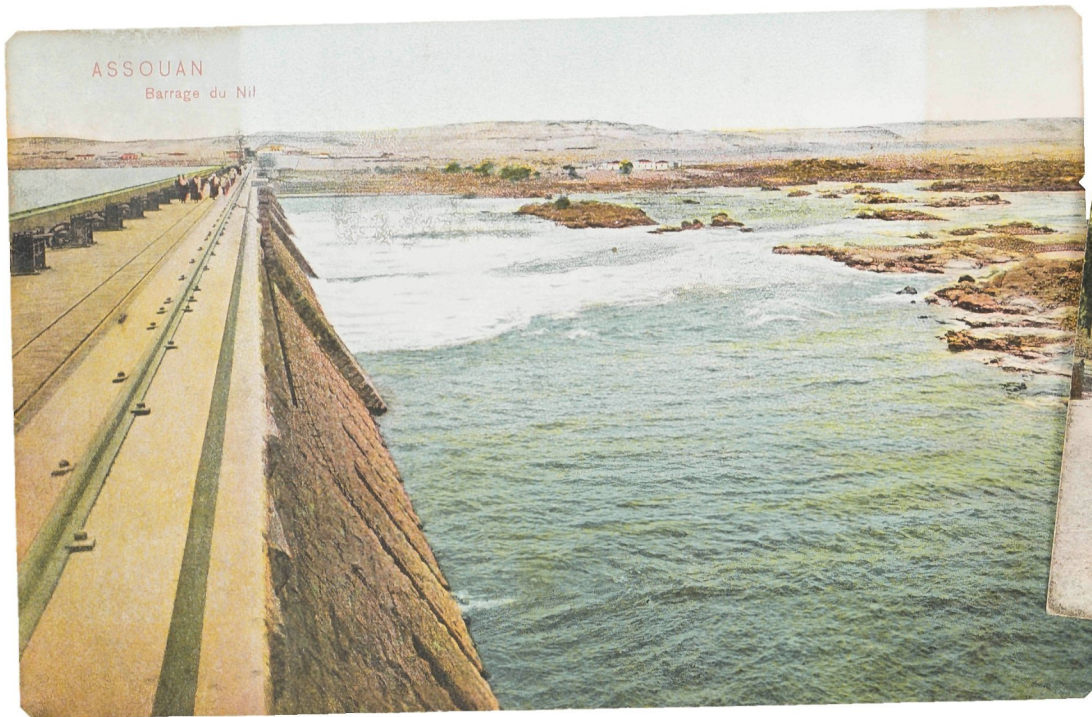
Imp. Berthaud Frères, Paris



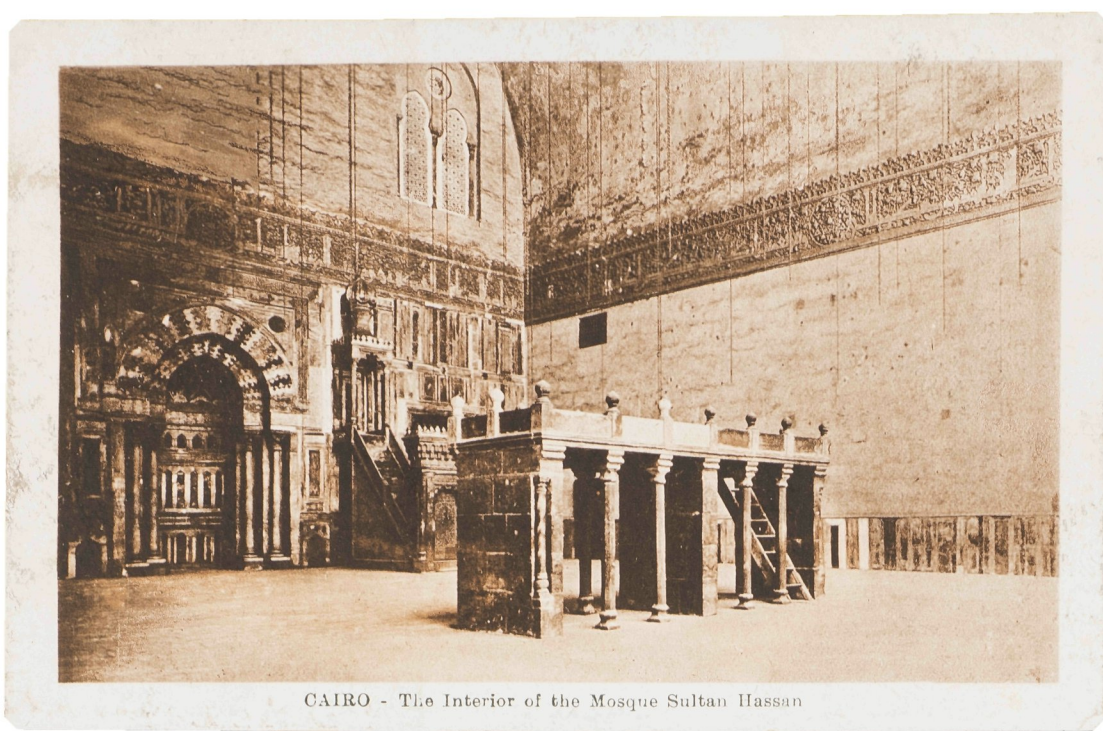












CAIRO - The Interior of the Mosque Sultan Hassan



CAIRO - The entrance of the Mosque El-Azhar



CAIRO - The entrance court of the Mosque el Azhar



CAIRO - The Mosque of Aksoukor



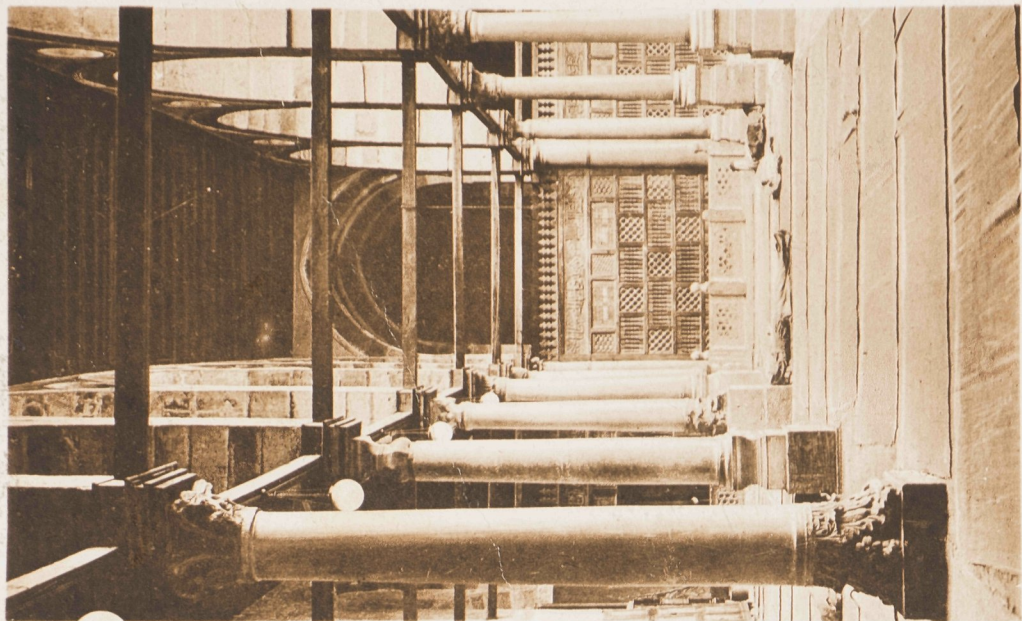
CAIRO - The Mosque of Keirbeck (Bleue Mosque)



CAIRO - The Mosque Mohamed Ali, at the Citadel



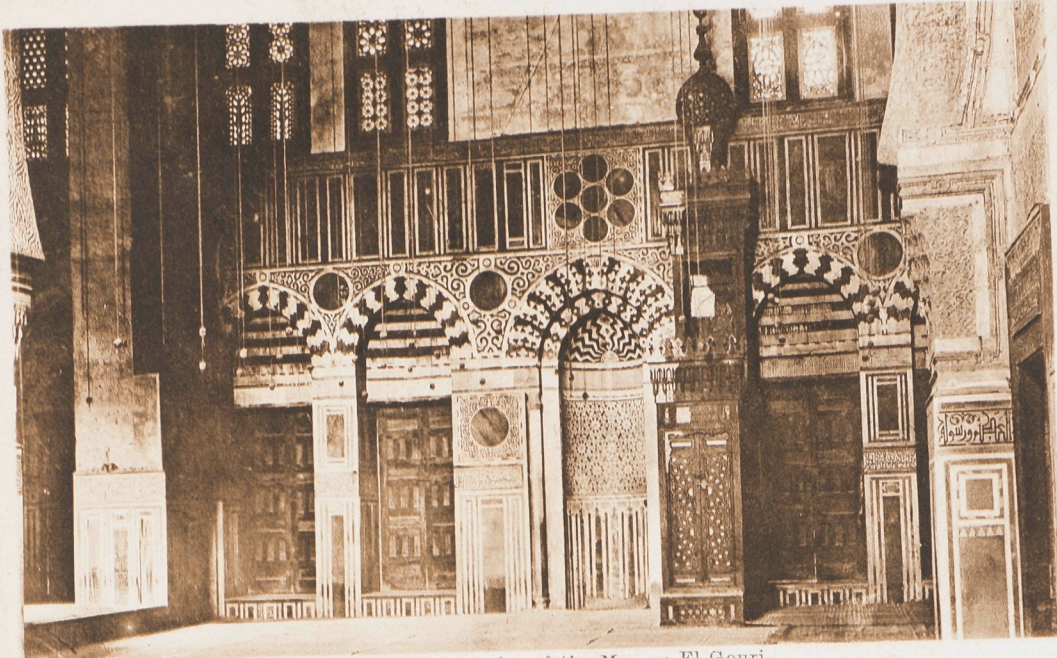
CAIRO - The Mosque of Sultan Hassan



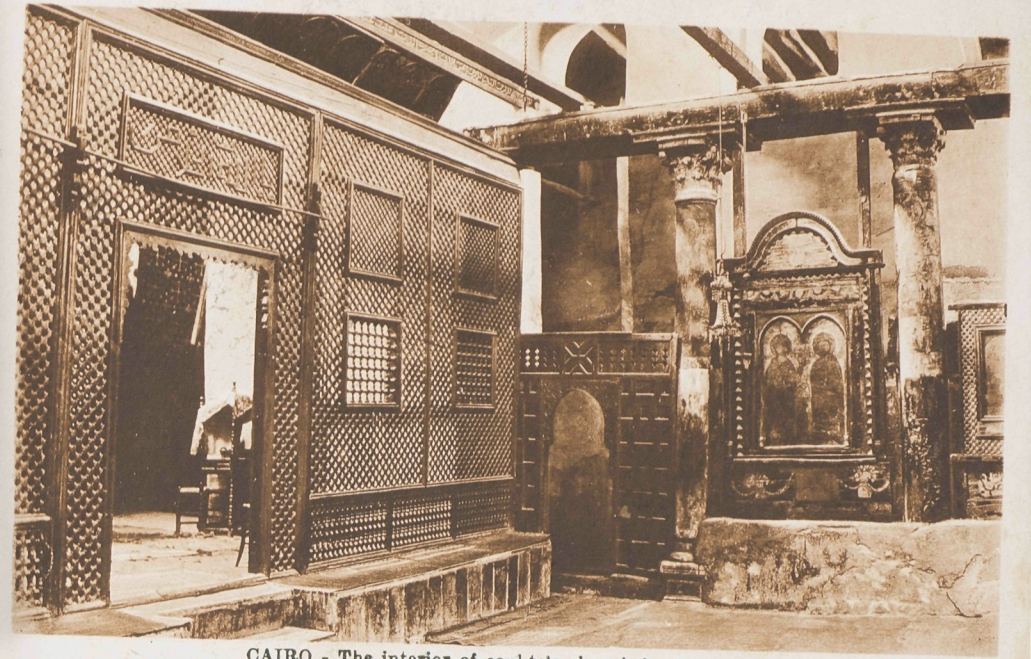
CAIRO - The Interior of the Mosque Amroun



CAIRO - The Mosque of Kalaoun



CAIRO - The Interior of the Mosque El-Gouri



CAIRO - The interior of cophte's church in old Cairo



CAIRO - The interior of the Mosque Ambrou



CAIRO - The colonnade of the Mosque Mohamed Ali



